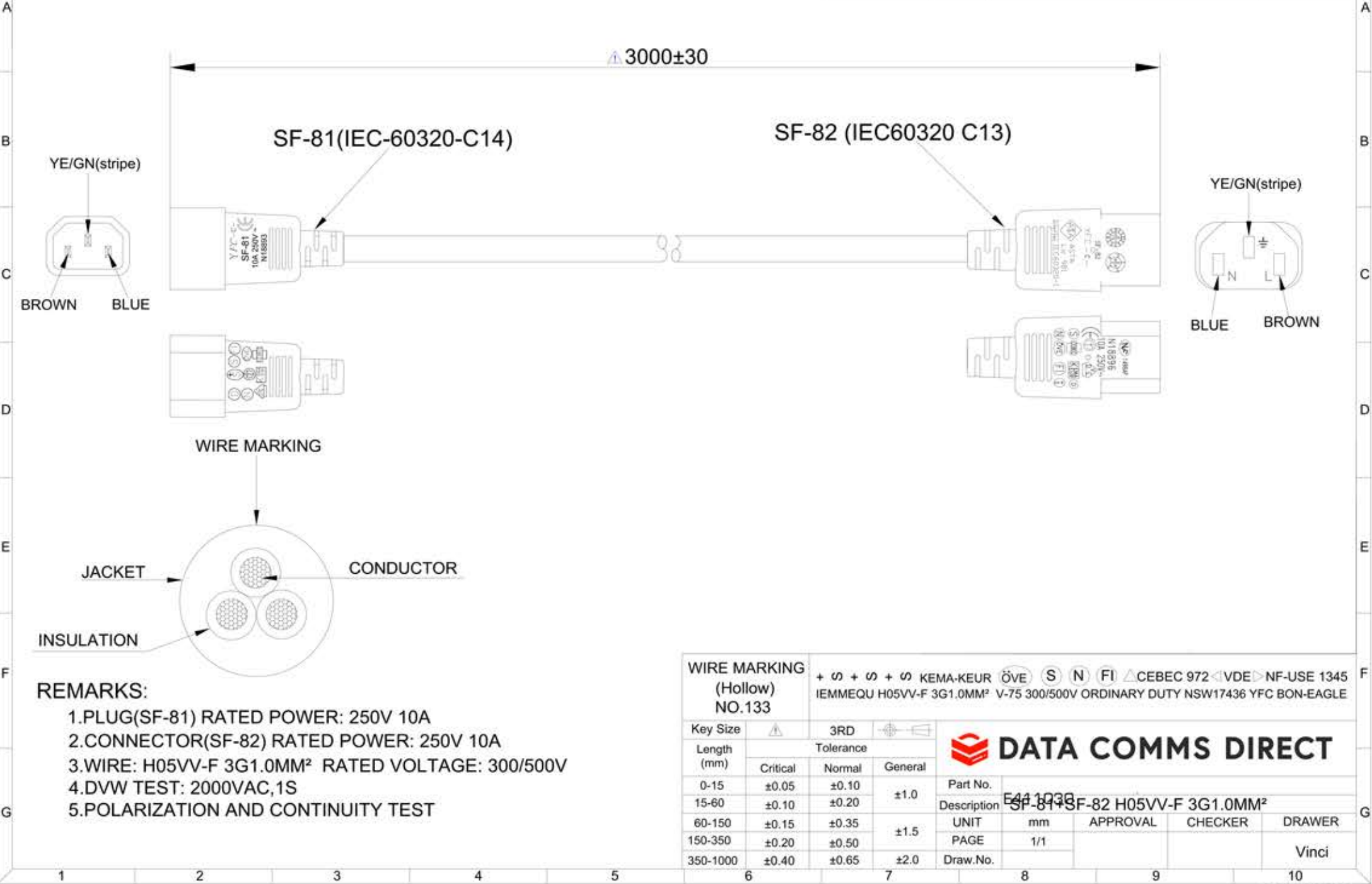


DATE	REV	DESCRIPTION	BY
2014.08.29	A/0	NEW	Vinci

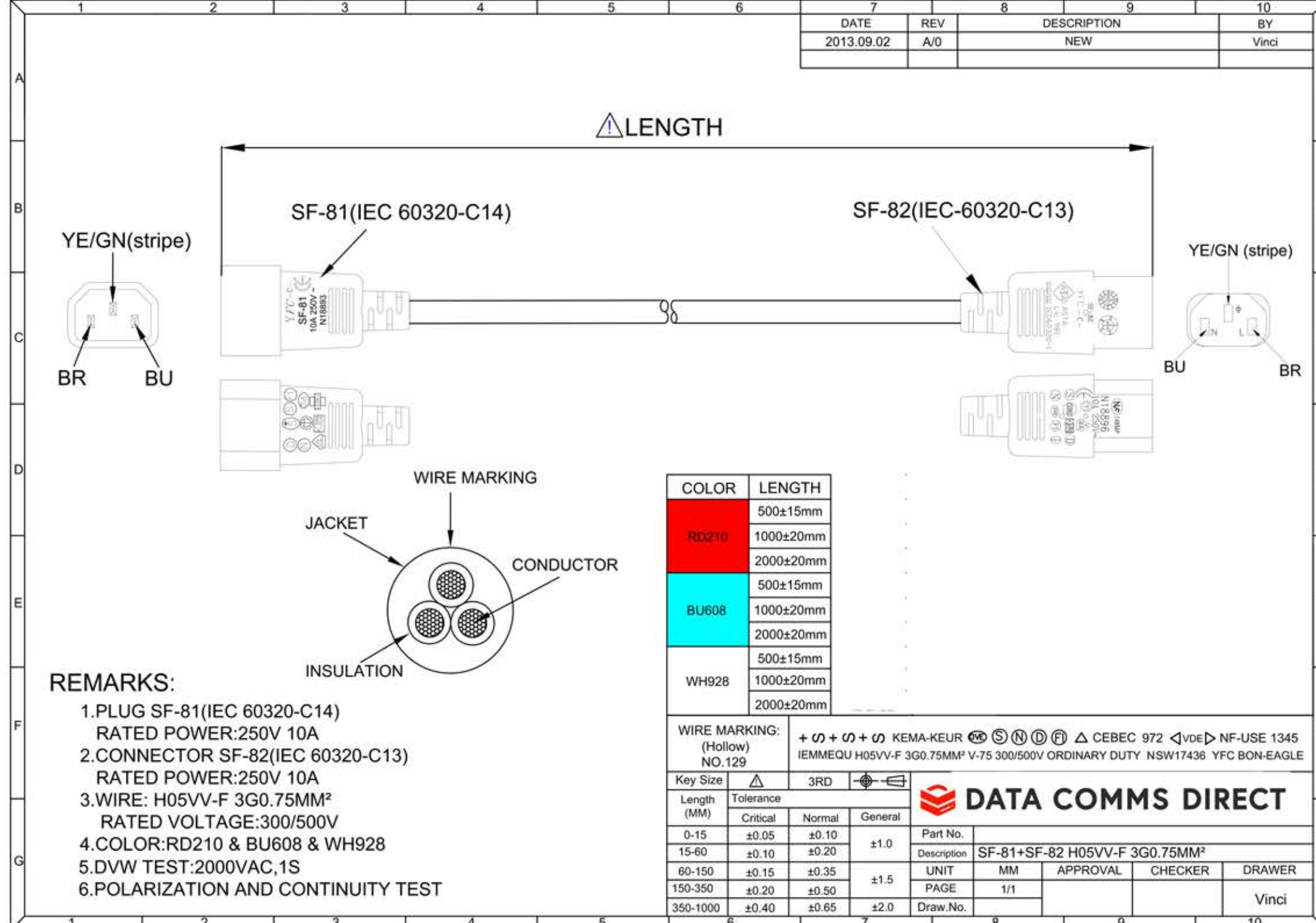


WIRE MARKING (Hollow) NO.133		+ 0 + 0 + 0 KEMA-KEUR ÖVE S N FI Δ CEBC 972 <VDE> NF-USE 1345 IEMMEQU H05VV-F 3G1.0MM² V-75 300/500V ORDINARY DUTY NSW17436 YFC BON-EAGLE		
Key Size	△	3RD		
Length (mm)	Tolerance			Part No.
	Critical	Normal	General	
0-15	±0.05	±0.10	±1.0	E411038
15-60	±0.10	±0.20		SF-81+SF-82 H05VV-F 3G1.0MM²
60-150	±0.15	±0.35	±1.5	UNIT mm APPROVAL CHECKER DRAWER
150-350	±0.20	±0.50		PAGE 1/1
350-1000	±0.40	±0.65	±2.0	Draw.No. Vinci



AC20140829002

DATE	REV	DESCRIPTION	BY
2013.09.02	A/0	NEW	Vinci



COLOR	LENGTH
RD210	500±15mm 1000±20mm 2000±20mm
BU608	500±15mm 1000±20mm 2000±20mm
WH928	500±15mm 1000±20mm 2000±20mm

**REMARKS:**  
 1. PLUG SF-81(IEC 60320-C14) RATED POWER:250V 10A  
 2. CONNECTOR SF-82(IEC 60320-C13) RATED POWER:250V 10A  
 3. WIRE: H05VV-F 3G0.75MM² RATED VOLTAGE:300/500V  
 4. COLOR:RD210 & BU608 & WH928  
 5. DVW TEST:2000VAC, 1S  
 6. POLARIZATION AND CONTINUITY TEST

WIRE MARKING (Hollow) NO.129		+ 0 + 0 + 0 KEMA-KEUR ÖVE S N D FI Δ CEBC 972 <VDE> NF-USE 1345 IEMMEQU H05VV-F 3G0.75MM² V-75 300/500V ORDINARY DUTY NSW17436 YFC BON-EAGLE		
Key Size	△	3RD		
Length (MM)	Tolerance			Part No.
	Critical	Normal	General	
0-15	±0.05	±0.10	±1.0	SF-81+SF-82 H05VV-F 3G0.75MM²
15-60	±0.10	±0.20		UNIT MM APPROVAL CHECKER DRAWER
60-150	±0.15	±0.35	±1.5	PAGE 1/1
150-350	±0.20	±0.50		Draw.No. Vinci
350-1000	±0.40	±0.65	±2.0	

